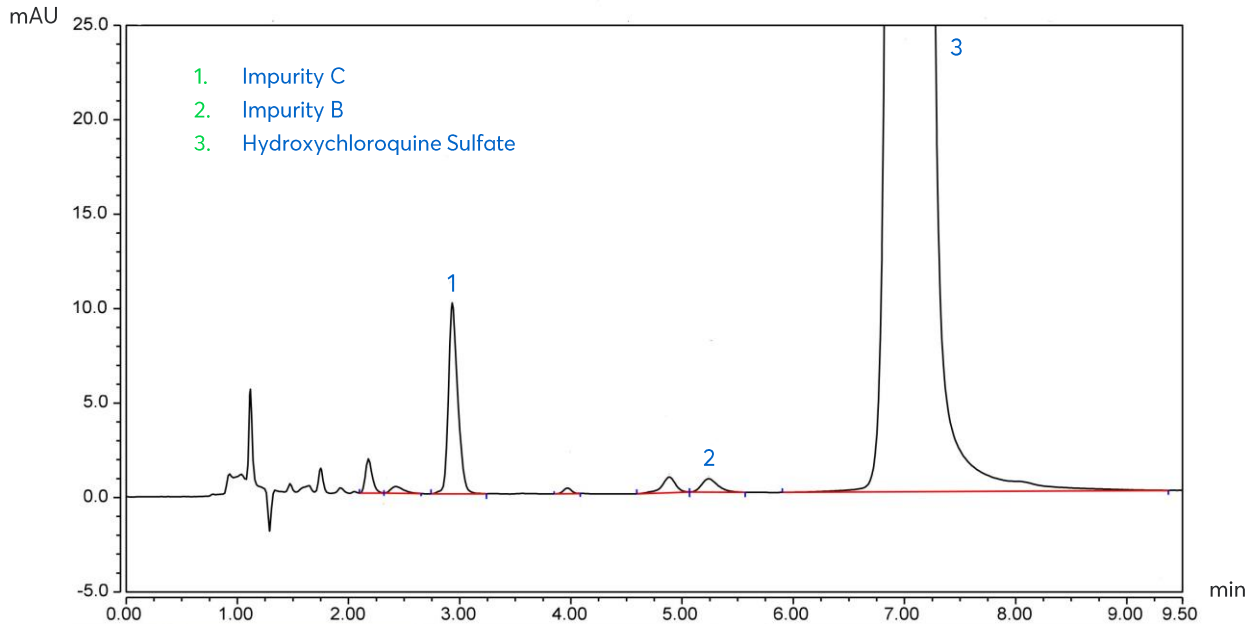


# Application note # 7170

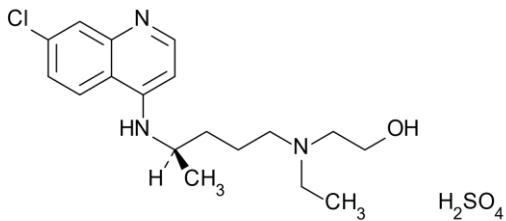
## Determination of Hydroxychloroquine Sulfate and Impurities



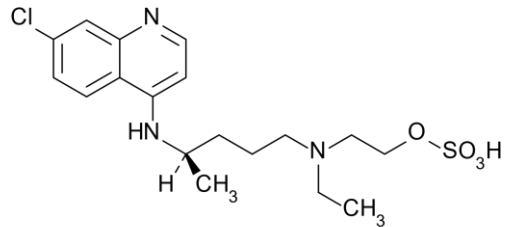
# Method Details

## CONDITIONS

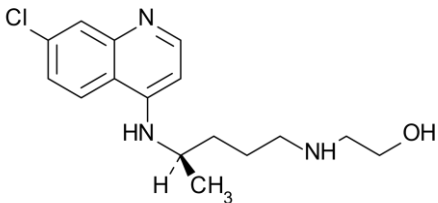
Column:	ACE Excel 5 SuperC18
Dimensions:	150 x 4.6 mm
Mobile Phase:	0.5% NH <sub>4</sub> OH in H <sub>2</sub> O (pH 10)/ 0.5% NH <sub>4</sub> OH in MeCN (61.5:38.5 v/v)
Flow Rate:	1.0 mL/min
Injection:	10 µL
Temperature:	22 °C
Detection:	UV, 220 nm



**Structure 1:** Hydroxychloroquine Sulfate



**Structure 2:** Impurity B



**Structure 3:** Impurity C

## ORDERING TABLE

Product	Details	Size	Part Number
ACE Excel 5 SuperC18	HPLC Column	150 x 4.6 mm	EXL-1211-1546U

Reproduced with permission of Bulgarian Scientific Pharmaceutical Laboratory at the Erudita Pharmacy of Pediatrics, Bulgaria and Chromassist Ltd, Bulgaria