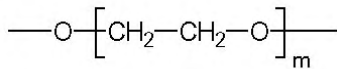


TRB-WAX

(100%) polyethylene glycol, bonded and cross-linked phase.

- 100% Polyethylene glycol (PEG)
- High polarity column
- Wide range of working temperatures and high thermal stability (270° C)
- Ideal for separating alcohols, aldehydes, ketones and aromatic isomers (BTX)



Structure of Polyethylene glycol

TRB-WAX Equivalent Phase

Agilent: HP-20M, INNOWAX, DB-WAX, DBWAXetr

Supelco: SUPELCOWAX-10, Carbowax 20M

Restek: STABILWAX

Varian: CP-WAX 52CB

SGE: BP-20

Alltech: AT-WAX

TRB-WAX

Column: **TRB-WAX**, P/N TR-140262

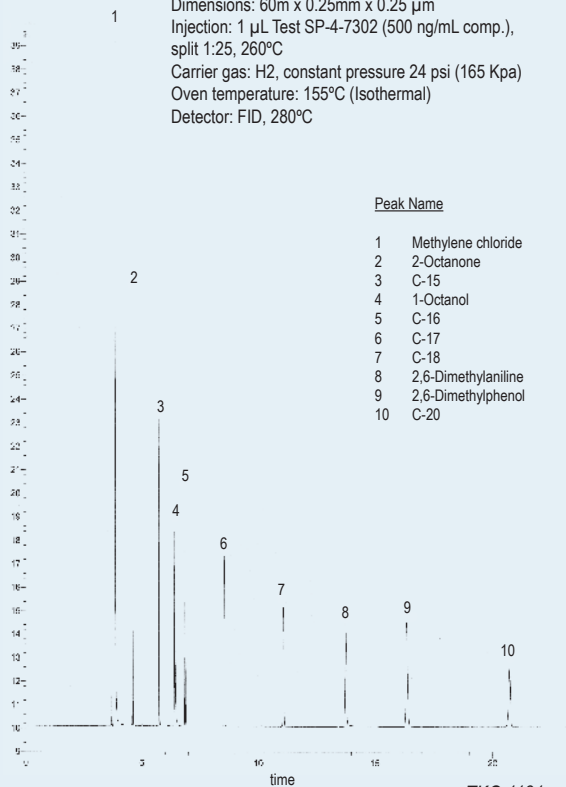
Dimensions: 60m x 0.25mm x 0.25 µm

Injection: 1 µL Test SP-4-7302 (500 ng/mL comp.), split 1:25, 260°C

Carrier gas: H₂, constant pressure 24 psi (165 Kpa)

Oven temperature: 155°C (Isothermal)

Detector: FID, 280°C



TRB-WAX

Internal Diam. (mm)	Length (m)	Film Thickness (µm)	Temp limits (°C)	Part. N° (P/N)	
0,10	10	0,10	40 to 260/270	TR-140141	
	10	0,20	40 to 260/270	TR-142141	
	20	0,10	40 to 260/270	TR-140181	
	20	0,20	40 to 260/270	TR-142181	
0,20	15	0,20	40 to 260/270	TR-142119	
	15	0,40	40 to 260/270	TR-140419	
	30	0,20	40 to 260/270	TR-142139	
	30	0,40	40 to 260/270	TR-140439	
	60	0,20	40 to 260/270	TR-142169	
	60	0,40	40 to 260/270	TR-140469	
0,25	15	0,10	40 to 260/270	TR-140112	
	15	0,25	40 to 260/270	TR-140212	
	15	0,50	40 to 260/270	TR-140512	
	30	0,10	40 to 260/270	TR-140132	
	30	0,25	40 to 260/270	TR-140232	
	30	0,50	40 to 260/270	TR-140532	
	30	1,00	40 to 260/270	TR-141032	
	60	0,10	40 to 260/270	TR-140162	
	60	0,25	40 to 260/270	TR-140262	
	60	0,50	40 to 260/270	TR-140562	
	0,32	15	0,10	40 to 260/270	TR-140113
		15	0,25	40 to 260/270	TR-140213
15		0,50	40 to 260/270	TR-140513	
30		0,10	40 to 260/270	TR-140133	
30		0,25	40 to 260/270	TR-140233	
30		0,50	40 to 260/270	TR-140533	
50		1,20	40 to 230/240	TR-141253	
60		0,10	40 to 260/270	TR-140163	
60		0,25	40 to 260/270	TR-140263	
60		0,50	40 to 260/270	TR-140563	
60		1,00	40 to 230/240	TR-141063	
60		1,20	40 to 230/240	TR-141263	
100	1,00	40 to 230/240	TR-141093		
0,53	10	1,00	40 to 240/250	TR-141045	
	15	1,00	40 to 240/250	TR-141015	
	30	1,00	40 to 240/250	TR-141035	
	30	1,33	40 to 240/250	TR-141735	
	30	2,00	40 to 240/250	TR-142035	
	60	1,00	40 to 240/250	TR-141065	
60	2,00	40 to 240/250	TR-142065		