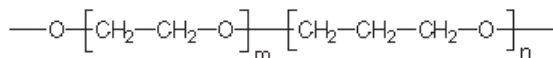


TRB-PAG

50% Polyethylene -50% polypropylene glycol, bonded and crosslinked phase.

- (50%) Polyethylene-(50%) polypropylene glycol
- Phase polarity slightly lower than TRB-WAX due to the inclusion of groups of propylene oxide
- Polarity similar to UCON phase



Structure of Poly(ethylenepropylene)glycol

TRB-PAG Equivalent Phase

Supelco: PAG

TRB-PAG

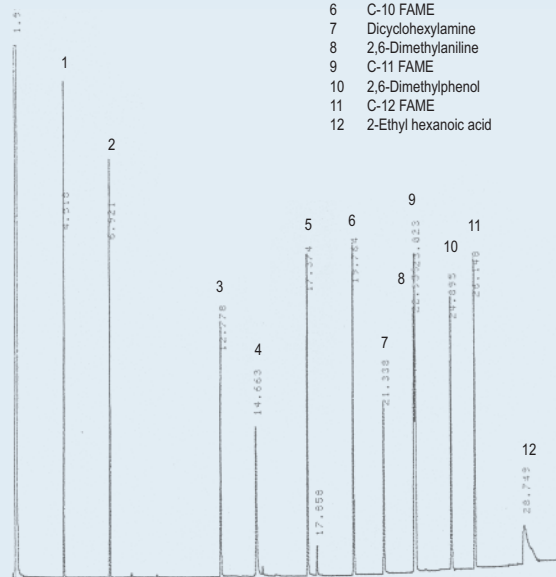
Internal Diam.(mm)	Length (m)	Film Thickness (µm)	Temp limits (°C)	Part. N°. (P/N)
0,25	15	0,25	30 to 220/230	TR-550212
	30	0,25	30 to 220/230	TR-550232
	60	0,25	30 to 220/230	TR-550262
0,32	15	0,25	30 to 220/230	TR-550213
	30	0,25	30 to 220/230	TR-550233
	60	0,25	30 to 220/230	TR-550263
0,53	15	0,50	30 to 220/230	TR-550515
	30	0,50	30 to 220/230	TR-550535
	60	0,50	30 to 220/230	TR-550565

TRB-PAG

Column: **TRB-PAG**, P/N TR-550232
 Dimensions: 30m x 0.25mm x 0.25 µm
 Injection: 1 µL Test Grob, split 1:25, 260°C
 Carrier gas: H₂, constant pressure 11 psi (75.8 Kpa)
 Oven temperature: 40°C @ 6°C/min to 230°C(5min)
 Detector: FID, 260°C

Peak Name

- C-10
- C-11
- Nonanal
- 2,3-Butanediol
- 1-Octanol
- C-10 FAME
- Dicyclohexylamine
- 2,6-Dimethylaniline
- C-11 FAME
- 2,6-Dimethylphenol
- C-12 FAME
- 2-Ethyl hexanoic acid



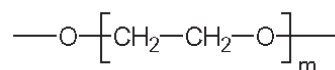
TKG 1130

SupraWax-280

Column totally equivalent to the SUPELCOWAX™ 10. Based in the popular phase Carbowax 20M.

Extended use for the analysis of methyl esters of fatty acids (FAMES) and analysis of solvents, fragrances, alcohols and aromatic compounds in the alimentary and flavor and fragrance industry.

- 100 % Poliethyleneglycol (PEG), bonded cross-linked phase
- Column of high polarity
- Phase practically equivalent to the USP G16 phase
- Ample range of operating temperatures and high thermal stability (35°C-280°C)
- Compatible with water and methanol injections, providing that these solvents be completely vaporized when they enter into the column.
- Reproducibility among columns guaranteed



Structure of Polyethyleneglycol

SupraWax-280 Equivalent Phase

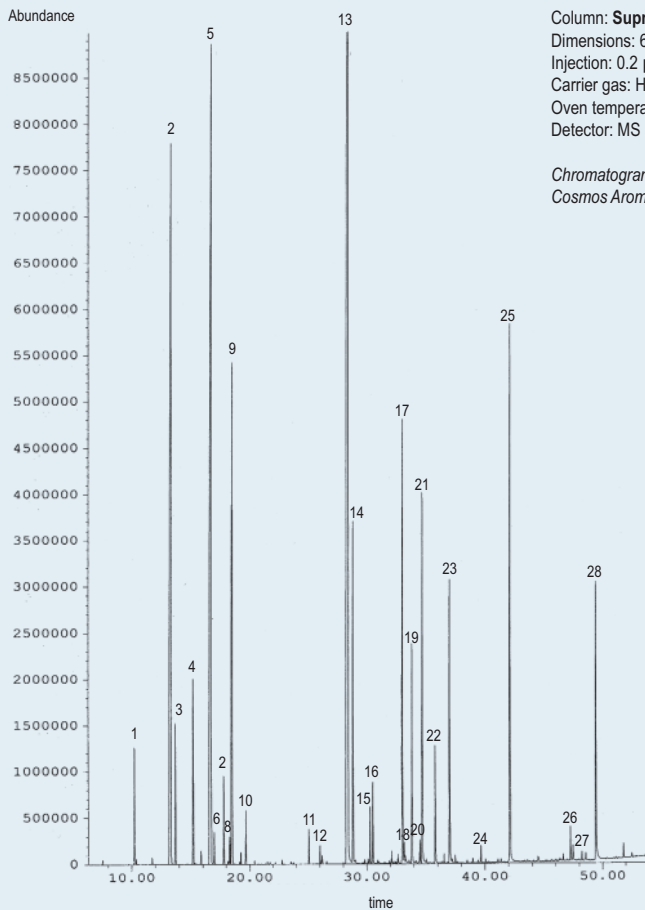
Supelco: Supelcowax™ 10.

SupraWax-280

Internal Diam.(mm)	Length (m)	Film Thickness (µm)	Temp limits (°C)	Part. N°. (P/N)
0,10	10	0,10	35 to 280	TR-830141
	15	0,10	35 to 280	TR-830111
	20	0,10	35 to 280	TR-830181
	20	0,20	35 to 280	TR-832181
	15	0,20	35 to 280	TR-832111
0,18	10	0,18	35 to 280	TR-830944
	20	0,18	35 to 280	TR-830984
	20	0,30	35 to 280	TR-832984
	40	0,30	35 to 280	TR-8329C4
0,20	30	0,20	35 to 280	TR-832139
	60	0,20	35 to 280	TR-832169
	60	0,40	35 to 280	TR-830469
0,25	15	0,25	35 to 280	TR-830212
	15	0,50	35 to 280	TR-830512
	30	0,25	35 to 280	TR-830232
	30	0,50	35 to 280	TR-830532

Internal Diam.(mm)	Length (m)	Film Thickness (µm)	Temp limits (°C)	Part. N°. (P/N)
60	60	0,25	35 to 280	TR-830262
		0,50	35 to 280	TR-830562
0,32	15	0,25	35 to 280	TR-830213
		0,50	35 to 280	TR-830513
30	30	0,25	35 to 280	TR-830233
		0,50	35 to 280	TR-830533
60	60	0,25	35 to 280	TR-830263
		0,50	35 to 280	TR-830563
0,53	15	0,50	35 to 280	TR-830515
		1,00	35 to 280	TR-831015
30	30	0,50	35 to 280	TR-830535
		1,00	35 to 280	TR-831035
60	60	1,00	35 to 280	TR-831063
		2,00	35 to 280	TR-832035
60	60	1,00	35 to 280	TR-831065
		2,00	35 to 280	TR-832065

Essential Oil of Flower of Orange Tree (Neroli)



Column: **SupraWax-280**, P/N TR-832169
 Dimensions: 60m x 0.20mm x 0.20 µm
 Injection: 0.2 µL, split 1:75, 260°C
 Carrier gas: He, 34.7 psi
 Oven temperature: 50°C(4min) @ 4°C/min to 265°C(10min)
 Detector: MS (Solvent delay, mass range 29:350 m/z) 280°C

Chromatogram provided by Antonio González from
 Cosmos Aromatica Internacional

Peak Name

1. α-Pynene
2. β-Pynene
3. Sabynene
4. β-Myrcene
5. Limonene
6. β-Phellandrene
7. Cis-b-ocymene
8. γ-Terpinene
9. Trans-b-ocymene
10. α-Terpinolene
11. Cis-linalool oxide
12. Trans-linalool oxide
13. Linalool
14. Linalyl acetate
15. Terpinen-4-ol
16. Trans-caryophyllene
17. α-Terpyneol
18. α-Terpenyl
19. Neryl acetate
20. Cyclogermacrene
21. Geranyl acetate
22. Cis-geranyol
23. Trans-geranyol
24. Phenyl acetonitrile
25. Nerolydol
26. Methylantranilate
27. Trans, trans-farnesyl acetate
28. Trans, trans-farnesol

TKG 1202