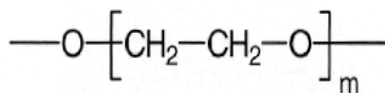


Sapiens-Wax.ms

100% polyethylene glycol, bonded and cross-linked phase

- Specifically designed for polar compounds
- Lower bleed for trace analysis
- Solvent rinsable
- Equivalent to USP G14, G15, G16, G20, and G39 phases

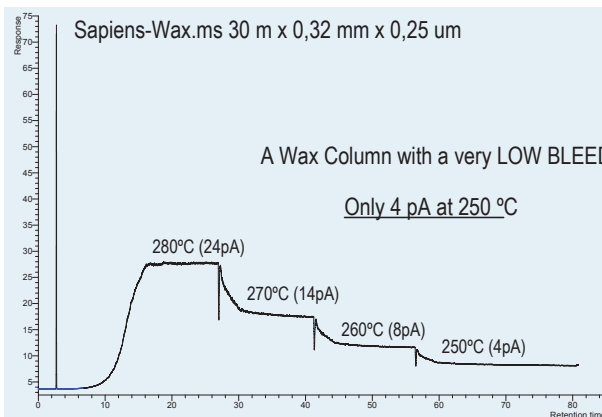


Structure of Polyethylene glycol

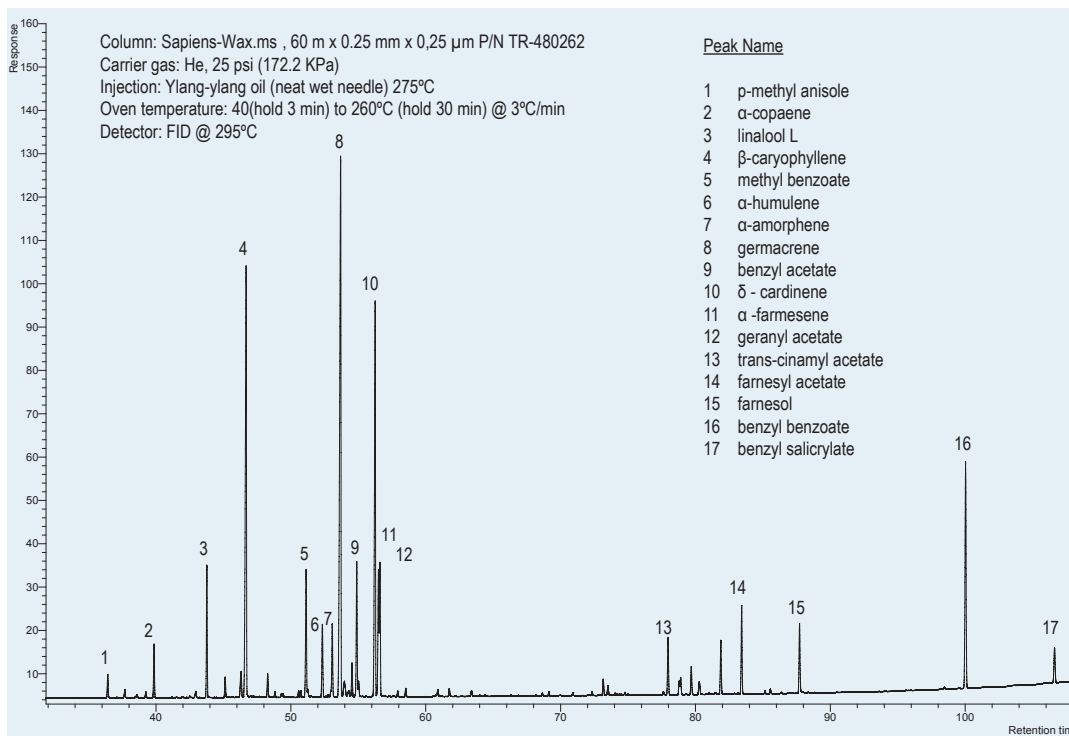
Sapiens-Wax.ms: Bleed vs Temperature

Sapiens-Wax.ms Equivalent Phase

Varian: VF-WAXms
Restek: STABILWAX MS,
Phenomenex: ZB-WAX,
Supelco: Supelcowax 10
SGE: SolGel-WAX
Macherey-Nagel: Optima-WAX



Applicación : Sapiens-Wax.ms-essential oil: HIGH-CLASS PERFUMES GC-FID Ylang-Ylang Oil



Sapiens-Wax.ms

Internal Diam(mm)	Length (m)	Film thickness(μm)	Temp Limits (°C)	Part. N°(P/N)
0,10	10	0,10	35 to 280	TR-480141
	10	0,20	35 to 280	TR-482141
	20	0,10	35 to 280	TR-480181
0,25	15	0,25	35 to 280	TR-480212
	15	0,50	35 to 280	TR-480512
	25	0,20	35 to 280	TR-482122
	30	0,25	35 to 280	TR-480232
	30	0,50	35 to 280	TR-480532
	30	1,00	35 to 280	TR-481032
	60	0,25	35 to 280	TR-480262
	0,32	30	0,25	35 to 280
	30	0,50	35 to 280	TR-480533
	30	1,00	35 to 280	TR-481033
	60	0,25	35 to 280	TR-480263
	60	0,50	35 to 280	TR-480563
	60	1,00	35 to 280	TR-481063