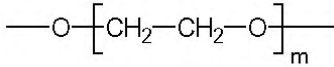


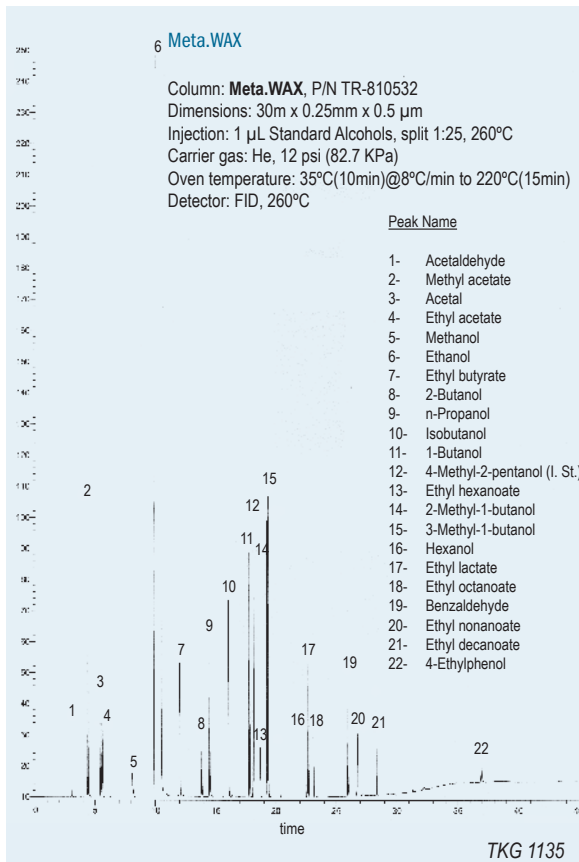
Meta.WAX

(100%) Polyethylene glycol, bonded and cross-linked phase.

- 100% Polyethylene glycol (PEG)
- High polarity column
- Minimum operating temperature 20° C
- Designed for analyzing volatiles in alcoholic beverages
- Excellent symmetry for aldehyde and glycol peaks



Structure of Polyethylene glycol



Meta.WAX Equivalent Phase

Agilent: HP-WAX, DB-WAX
Varian: CP-WAX 57 CB
Restek: Rtx-WAX

Meta.WAX

Internal Diam. (mm)	Length (m)	Film Thickness (µm)	Temp limits (°C)	Part. N° (P/N)	
0,10	10	0,10	20 to 240/250	TR-810141	
		0,20	20 to 240/250	TR-812141	
	20	0,10	20 to 240/250	TR-810181	
		0,20	20 to 240/250	TR-812181	
0,18	10	0,18	20 to 240/250	TR-810944	
		0,18	20 to 240/250	TR-810984	
	20	0,18	20 to 240/250	TR-812984	
		0,30	20 to 240/250	TR-812984	
	40	0,18	20 to 240/250	TR-8109C4	
		0,30	20 to 240/250	TR-8129C4	
0,25	15	0,10	20 to 240/250	TR-810112	
		0,25	20 to 240/250	TR-810212	
	15	0,50	20 to 240/250	TR-810512	
		0,10	20 to 240/250	TR-810132	
	30	0,25	20 to 240/250	TR-810232	
		0,50	20 to 240/250	TR-810532	
	60	0,20	20 to 240/250	TR-812162	
		0,25	20 to 240/250	TR-810262	
		15	0,25	20 to 240/250	TR-810213
			0,50	20 to 240/250	TR-810513
		15	1,00	20 to 230/240	TR-811013
			0,25	20 to 240/250	TR-810233
0,32	30	0,25	20 to 240/250	TR-810233	
		0,50	20 to 240/250	TR-810533	
	30	1,00	20 to 230/240	TR-811033	
		0,25	20 to 240/250	TR-810263	
	60	0,25	20 to 240/250	TR-810263	
		0,50	20 to 240/250	TR-810563	
	60	0,64	20 to 240/250	TR-816463	
		1,00	20 to 230/240	TR-811063	
	0,53	15	1,20	20 to 230/240	TR-811215
			1,20	20 to 230/240	TR-811235